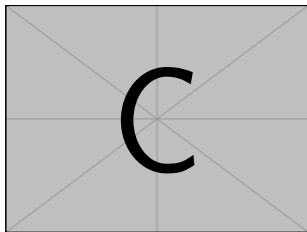


Title

Subtitle



Mattia Puddu

mattiapuddu@icloud.com

Institute

Supervisors: Supervisor
Second Supervisor

Examiners: Examiner
Second Examiner

Navigation and Presentation Commands

Navigation and Presentation Commands

Sections



You can divide the document using

```
\section{Parte}
```

This way, only the sections belonging to the current part are shown in the sidebar.

Alert

This presentation is divided into sections: take a look at the sidebar to see the effect.

Navigation and Presentation Commands

Overlays



With the command

`\pause`

only part of the slide is shown,

With the command

`\pause`

only part of the slide is shown, and as you proceed, the rest appears.
Check out the behaviour of the progress bar!

With

`\only<3,4>{Topic}`

the content is shown only on slide repetitions number 3 and 4. You can customize on which slide numbers the content appears:

With the command

`\pause`

only part of the slide is shown, and as you proceed, the rest appears.
Check out the behaviour of the progress bar!

With

`\only<3,4>\{Topic}`

the content is shown only on slide repetitions number 3 and 4. You can customize on which slide numbers the content appears:

This is the third repetition...

With the command

`\pause`

only part of the slide is shown, and as you proceed, the rest appears.
Check out the behaviour of the progress bar!

With

`\only<3,4>\{Topic}`

the content is shown only on slide repetitions number 3 and 4. You can customize on which slide numbers the content appears:

And this is the fourth one!



With

```
\onslide<3>{Content}
```

when the content is not shown, it still leaves blank space where it would appear:

This is the first repetition...



With

```
\onslide<3>{Content}
```

when the content is not shown, it still leaves blank space where it would appear:

And this is the second one!

This concept can also be applied to graphical effects - for example:

```
\textbf<5>{Text}
```



We can achieve the same effects within a limited area using

```
\begin{overlayarea}{\textwidth}{3cm}  
  \only<1>{First repetition}  
  \only<2>{Second repetition}  
\end{overlayarea}
```

First repetition



We can achieve the same effects within a limited area using

```
\begin{overlayarea}{\textwidth}{3cm}  
  \only<1>{First repetition}  
  \only<2>{Second repetition}  
\end{overlayarea}
```

Second repetition

Navigation and Presentation Commands

Blocks



```
\begin{block}{Normal block}Text\end{block}
```

Normal block

Text

```
\begin{alertblock}{Alert block}Text\end{alertblock}
```

Alert block

Text

```
\begin{exampleblock}{Example block}Text\end{exampleblock}
```

Example block

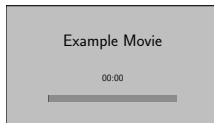
Text

Multimedia

With

```
\embedvideo*{\includegraphics[scale=.25]  
  {AuxiliaryFiles/Videos/Test.mp4}}{Label}
```

we can insert a video.



Alert

It does not work with pause commands, and as far as I know, Overleaf does not support videos; Adobe Acrobat is fine to use this feature
Only modify the video filename 'Test.mp4' and the options inside the square brackets

Environments



Navigation and
Presentation
Commands

Multimedia

Environments

Description, Itemize
Hyperlinks,
Citations, URLs
The "column"
environment

New commands

PGF and
Tikzpicture

Theorem

Statement

Proof Proof text



Proposition

Statement

Lemma

Statement

Corollary

Statement



Navigation and
Presentation
Commands

Multimedia

Environments

Description, Itemize
Hyperlinks,
Citations, URLs
The "column"
environment

New commands

PGF and
Tikzpicture

Definition

Text

Example

Text

Remark

Text



Description

Label 1 Text

Label 2 Text

Itemize

- ◇ Text
- ◇ Text

Environments

Hyperlinks, Citations, URLs

A hyperlink is created with

```
\label{Label}
```

and referenced with

```
\ref{Label}
```



A citation to a book in the bibliography is made with

```
\cite{LabelBook}
```

To insert a link, you can use

```
\url{https://www.google.com}
```


Environments

The "column" environment



To break text into multiple columns (or, for example, to position an image), you can use a command like this:

```
\begin{columns}[T]  
\column{.5\textwidth}Test1  
\column{.5\textwidth}Test2  
\end{columns}
```

Test1

Test2



If used with the option below, a column can be made to appear only on certain slides:

```
\begin{columns}<1>[T]
\column{.5\textwidth}Test1      \column{.5\textwidth}
\end{columns}

\begin{columns}<2>[T]
\column{.5\textwidth}            \column{.5\textwidth}Test2
\end{columns}

\begin{columns}<3>[T]
\column{.5\textwidth}Test1      \column{.5\textwidth}Test2
\end{columns}
```

Test1



If used with the option below, a column can be made to appear only on certain slides:

```
\begin{columns}<1>[T]
\column{.5\textwidth}Test1      \column{.5\textwidth}
\end{columns}
\begin{columns}<2>[T]
\column{.5\textwidth}            \column{.5\textwidth}Test2
\end{columns}
\begin{columns}<3>[T]
\column{.5\textwidth}Test1      \column{.5\textwidth}Test2
\end{columns}
```

Test2

If used with the option below, a column can be made to appear only on certain slides:

```
\begin{columns}<1>[T]
\column{.5\textwidth}Test1      \column{.5\textwidth}
\end{columns}
\begin{columns}<2>[T]
\column{.5\textwidth}            \column{.5\textwidth}Test2
\end{columns}
\begin{columns}<3>[T]
\column{.5\textwidth}Test1      \column{.5\textwidth}Test2
\end{columns}
```

Test1

Test2

New commands



The various commands presented in my other templates (book, article) compatible with Beamer can be used. A list of these commands is provided in those other templates, which can be found at the following link:

<https://mattiapuddu25.github.io/index.html>

PGF and Tikzpicture



As with commands, graphs can also be created in Beamer using pgfplots and TikZ. Here I present some examples (different from those I included in the book and Beamer templates):

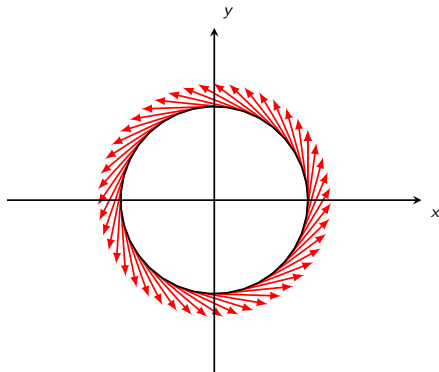


Figure 1. Parametrizations

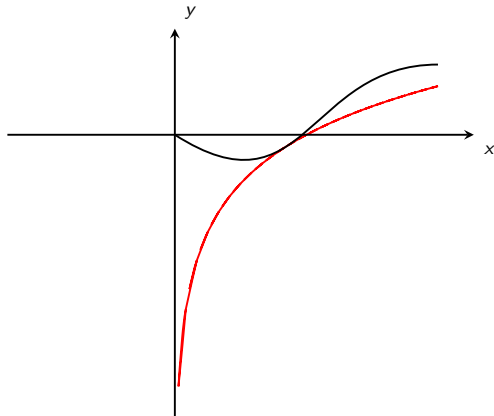


Figure 2. Interpolation and paths

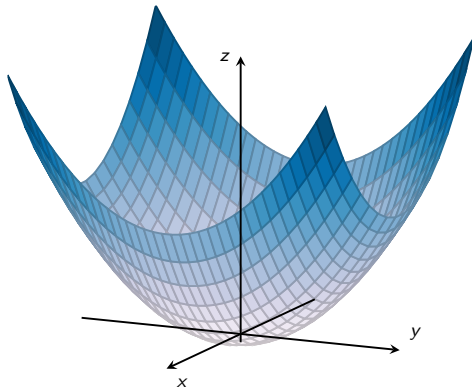


Figure 3. 3D Surfaces

Thanks for your attention!

Backup Slide